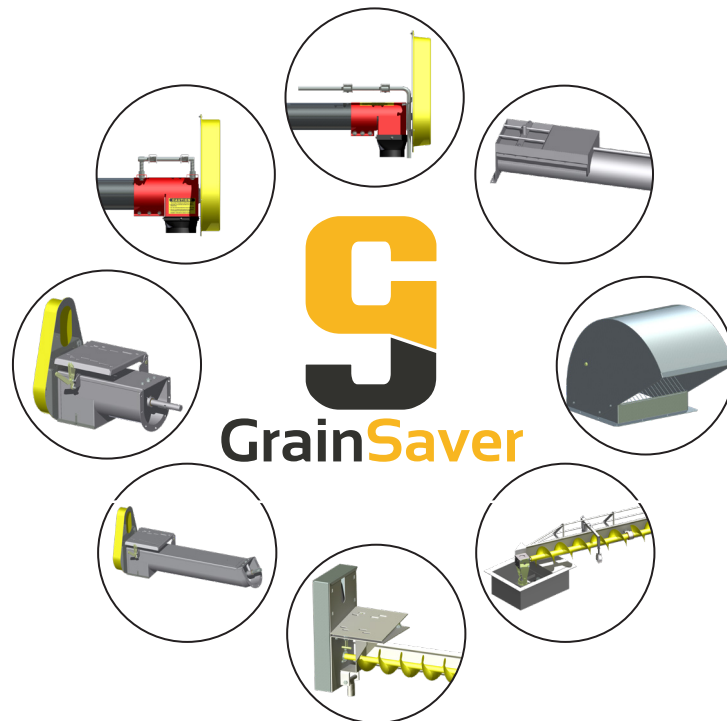




# Haven Industries

Est. 1995

## PRODUCT CATALOG 2021



# INDEX

---

- Page 3:** Grain Bin Vents & Fan Transitions
- Page 4:** Utility Augers
  - Commercial Augers
- Page 5:** Gravity Box Augers
  - U-Trough
- Page 6:** HD Commercial Augers
  - Bin Top Augers & Accessories
- Page 7:** Double and Triple Hopper Unload Tubes
- Page 8:** Unload Tube & Bin Sweep Accessories
  - Unload Screws
- Page 9:** Bin Sweeps
  - Replacement Wheels & Accessories
- Page 10:** U-Trough Powersweep Unload Systems
- Page 11:** Tube Style Powersweep Unload Systems
  - Standard U-Trough Unloads
- Page 12:** U-Trough Powerhead Drives
- Page 13:** Tube Style Powerhead Drives
- Page 14:** Commercial Powersweeps
- Page 15:** Angle Rings, Flange Clamps & Adapters
  - Sheaves
  - Bushing
  - Belts
- Page 16:** Repair Parts & Accessories
- Page 17:** Repair Parts & Accessories
- Page 18:** Repair Parts & Accessories
- Page 19:** Powersweep Screws
- Page 20:** Specialty Flighting
  - Replacement Flighting
- Page 21:** Design Information
- Page 22:** Horsepower Requirements
- Page 23:** Manufacturer's Limited Warranty

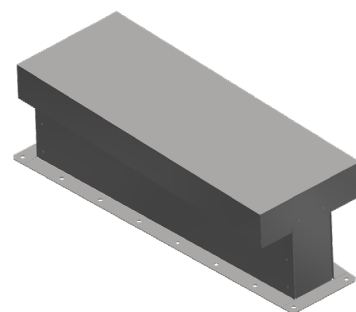
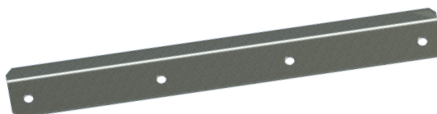
## GRAIN BIN VENTS

Standard on all Grain Saver® roof vents is a wire mesh screen. Solid screens are available. Roof vents are plastic wrapped and palletized. Cardboard shipping boxes are optional on some sizes and hold 1-2 vents each.

DESCRIPTION	PART #	ANGLE
8" x 8" Vent	GS-870	70°
12" x 12" Vent	GS-1270	70°
15" x 15" Vent	GS-1570	70°
18" x 18" Vent	GS-1870	70°
10"x 32" Tapered Peak Vent	GS-VT30	



## GRAIN BIN VENT ACCESSORIES



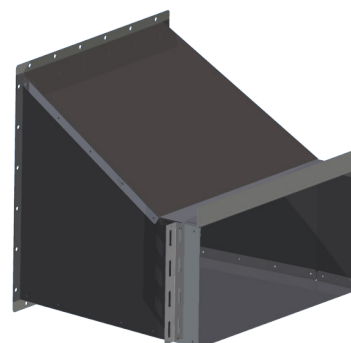
DESCRIPTION	PART #	VENT SIZE	WT(lbs)
8" VENT INSTALLATION KIT	VK-8	8" x 8"	1
12" VENT INSTALLATION KIT	VK-12	12" x 12"	1
15" VENT INSTALLATION KIT	VK-15	15" x 15"	1
18" VENT INSTALLATION KIT	VK-18	18" x 18"	2
8" VENT SUPPORT ANGLE	RS-8	8" x 8"	1
12" VENT SUPPORT ANGLE	RS-12	12" x 12"	1
15" VENT SUPPORT ANGLE	RS-15	15" x 15"	1
18" VENT SUPPORT ANGLE	RS-18	18" x 18"	2



Reinforcement angles stiffen roof sheets and feature 12 ga. galvanized steel. Installation kits includes all required fasteners.

## FAN TRANSITIONS

DESCRIPTION	PART #	WT(lbs)
12 - 18" Fan Transition	FT-18-1000	48
12 - 32" Fan Transition	FT-32-1000	156



## GALVANIZED UTILITY AUGERS

All augers (commercial and utility) ship with a powder coated motor mount box, ABS drop spout, belt guard, belt guard plate, belt(s), and motor mount hardware. Flightings are extension ready. Motor is not included. 4", 5", and 6" utility augers have 3/4" shaft size. 6" commercial has a 1" shaft. 8" commercial has 1-1/4" shaft.



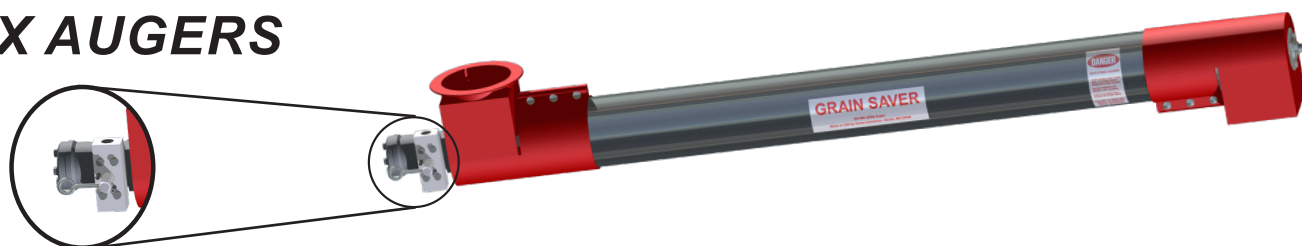
DESCRIPTION	LENGTH	4"		5"		6"	
		PART #	WT(lbs)	PART #	WT(lbs)	PART #	WT(lbs)
Base Section	6'	GS-406	38	GS-506	42	GS-606	54
Base Section	11'	GS-411	62	GS-511	72	GS-611	90
Base Section	16'	GS-416	84	GS-516	97	GS-616	120
Base Section	21'	GS-421	110	GS-521	130	GS-621	163
Extension w/sleeve	5'	GS-405E	23	GS-505E	30	GS-605E	40
Extension w/sleeve	10'	GS-410E	45	GS-510E	55	GS-610E	70
Extension w/sleeve	15'	GS-415E	65	GS-515E	80	GS-615E	100
Extension w/sleeve	20'	GS-420E	90	GS-520E	110	GS-620E	135

## GALVANIZED COMMERCIAL AUGERS



DESCRIPTION	LENGTH	6"		8"	
		PART #	WT(lbs)	PART #	WT(lbs)
Basic Section	6'	GS-606C	60	GS-806C	92
Basic Section	11'	GS-611C	95	GS-811C	154
Basic Section	16'	GS-616C	125	GS-816C	220
Basic Section	21'	GS-621C	170	GS-821C	265
Extension w/ sleeve	5'	GS-605C	45	GS-805C	65
Extension w/ sleeve	10'	GS-610C	76	GS-810C	115
Extension w/ sleeve	15'	GS-615C	112	GS-815C	165
Extension w/ sleeve	20'	GS-620C	132	GS-820C	200

# GRAVITY BOX AUGERS



**Gravity Box Augers** come in 6" flighting sizes. Standard on all models is an articulating hopper, hydraulic motor with flow controls, tube saddle, and cable support kit for grain cart applications.

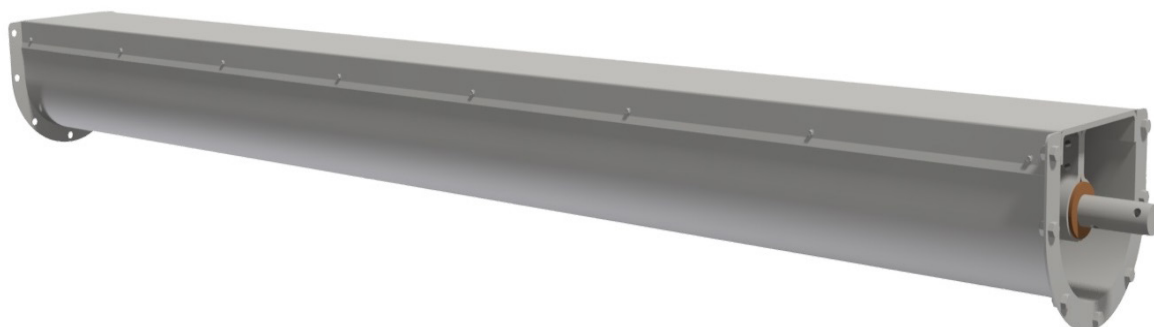
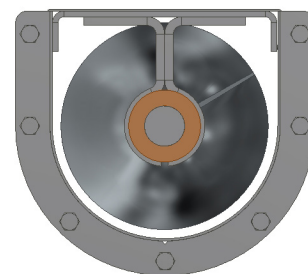
**Hydraulic hoses are not included**, as they must be manufactured specifically for each installation.

DESCRIPTION	PART #	LENGTH
w/ standard flighting	GS-611S	11'
w/ standard flighting	GS-614S	14'
w/ cupped flighting	GS-611C	11'
w/ cupped flighting	GS-614C	14'
w/ bristle flighting	GS-611B	11'
w/ bristle flighting	GS-614B	14'
w/ poly cupped flighting	GS-611PC	11'
w/ poly cupped flighting	GS-614PC	14'
w/ poly flighting	GS-611P	11'
w/ poly flighting	GS-614P	14'
Telescoping Spout Kit	GS-TK06	

## U-TROUGH

**U-trough Sections** can be ordered at any length and completed with optional hanger bearing(s) or end plate with support bearing. We offer U-trough in a range of sizes from 6", 8", 10", 13", and 17", in mild steel or stainless steel. - Call for more info.

	8" U-TROUGH		10" U-TROUGH	
DESCRIPTION	PART #	LENGTH	PART #	LENGTH
U-trough	802-01-0001U	1'	102-01-0001U	1'
Hanger Bearing	802-00-0001U	-	102-68-0001U	-



**Our Standard 10" U-Trough** shown on the left are complete with 9" x 7ga flighting with lid and flanges. Painted. Shown with optional hanger bearing.

## HEAVY DUTY PAINTED COMMERCIAL AUGERS

DESCRIPTION	LEN.	8"		10"	
		PART #	WT(lbs)	PART #	WT(lbs)
Basic Section	6'	GS-806HD	92	GS-1006HD	-
Basic Section	11'	GS-811HD	154	GS-1011HD	-
Basic Section	16'	GS-816HD	220	GS-1016HD	-
Basic Section	21'	GS-821HD	265	GS-1021HD	-
Extension	5'	GS-805HD	65	GS-1005HD	-
Extension	10'	GS-810HD	115	GS-1010HD	-
Extension	15'	GS-815HD	165	GS-1015HD	-
Extension	20'	GS-820HD	200	GS-1020HD	-
Mounting Brackets		MBA08	8	MBA10	10
14" x 14" Inlet Hopper		HP08	45	HP10	45

**Heavy Duty Commercial Augers** are multipurpose augers in standard lengths. They come complete with a heavy duty powerhead & drive kit, including motor plate, belt tensioner, belts, belt guard, back plate, and pulley. They can be ordered with and without welded flange connectors. All augers are extension ready.

## BIN TOP AUGER TUBES

DESCRIPTION	PART #
8" Bin Top Auger (Figure:1)	802-XX-1200
10" Bin Top Auger	102-XX-1200
12" Bin Top Auger	112-XX-1200
8" Mounting Bracket	MBA08
10" Mounting Bracket	MBA10
12" Mounting Bracket	MBA12

**Bin Top Augers** are multipurpose augers custom built to requested specifications. Pricing reflects painted auger tube with flanging and flange connectors. Power-head drive will need to be added. See page 16 for optional available hopper selection.

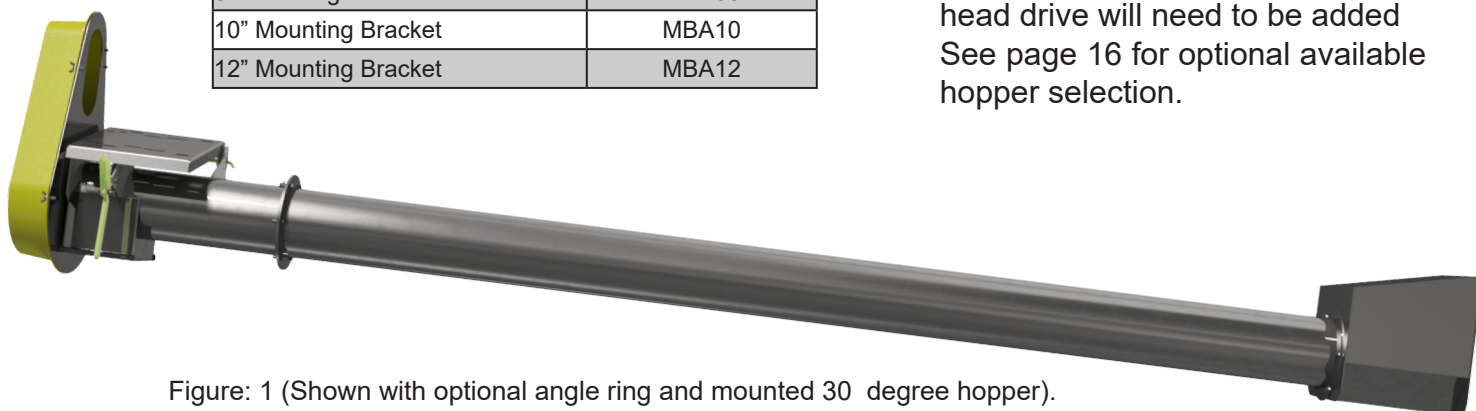
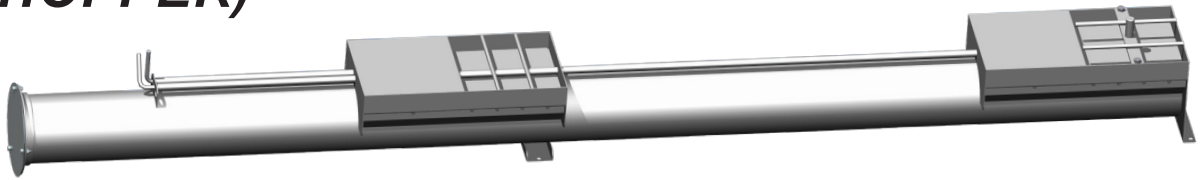


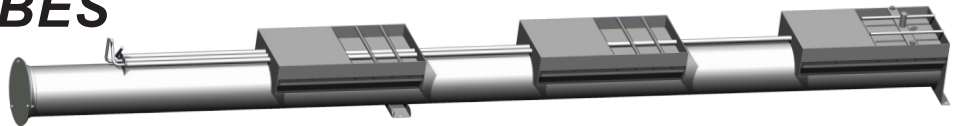
Figure: 1 (Shown with optional angle ring and mounted 30 degree hopper).

## UNLOAD TUBES (2 HOPPER)



BIN DIA.	LENGTH	8"		10"	
		PART #	WT(lbs)	PART #	WT(lbs)
19'	12' - 0"	800-19-1002	187		
21'	13' - 0"	800-21-1002	194		
24'	14' - 6"	800-24-1002	212	100-24-1002	234
27'	16' - 0"	800-27-1002	222	100-27-1002	248
30'	17' - 6"	800-30-1002	232	100-30-1002	257
33'	19' - 0"	800-33-1002	242	100-33-1002	269
36'	20' - 6"	800-36-1002	252	100-36-1002	281
42'	23' - 6"	800-42-1002	272	100-42-1002	305
48'	26' - 6"	800-48-1002	285	100-48-1002	330

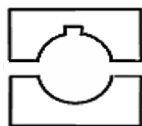
## UNLOAD TUBES (3 HOPPER)



BIN DIA.	LENGTH	8"		10"	
		PART #	WT(lbs)	PART #	WT(lbs)
30'	17' - 6"	800-30-1003	232	100-30-1003	259
33'	19' - 0"	800-33-1003	242	100-33-1003	269
36'	20' - 6"	800-36-1003	252	100-36-1003	281
42'	23' - 6'	800-42-1003	272	100-42-1003	305
48'	26' - 6'	800-48-1003	285	100-48-1003	330

**Bin Unload Tubes** are operated by control rods attached to the intake hopper gate. Intake hoppers are built with 12 Ga. steel and fully welded. Floor brackets are welded on at 6'-10' intervals. The center hopper sweep swivel is standard on all models. Unload Tubes ship with a galvanized end cover and the operator's manual.

## UNLOAD TUBE & BIN SWEEP ACCESSORIES



DESCRIPTION	8"		10"	
	PART #	WT(lbs)	PART #	WT(lbs)
Bin Wall Plate	800-14-2000	6	100-16-2000	11
Hopper Flange (12x12x2)	200-12-2002	8	200-12-2002	8
Hopper Flange (12x24x2)	200-24-2002	6	200-24-2002	6
Center Hopper	800-01-1212	44	100-01-1212	45
Door & Intermediate Hopper	800-02-1212	41	100-02-1212	42
<b>BIN SWEEP ACCESSORIES</b>				
Bin wall sweep safety stop	BSS-00-1100			
5:1 reduction drive wheel	802-00-1001			
Male sweep pivot pin for unload tube	002-01-1100			
Female pivot pin for bin sweep	002-02-1100			
Drive carton for 5" bin sweep	500-00-DCTN			
Drive carton for 7" bin sweep	700-00-DCTN			

Bin wall plates flash the area on the bin wall where an opening is cut to accommodate an unload tube. Hopper flanges flash the area in the drying/aeration floor where an opening is cut to allow the grain to enter the tube.

## UNLOAD SCREWS



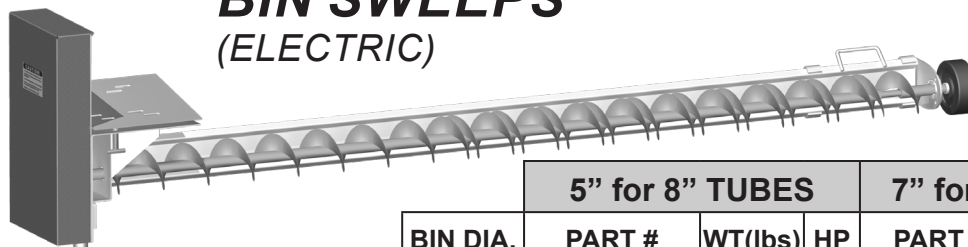
BIN DIA.	LENGTH	8"		10"	
		PART #	WT(lbs)	PART #	WT(lbs)
18'	11' - 4"	800-18-3010	46	100-18-3007	68
19'	11' - 10"	800-19-3010	48	100-19-3007	71
21'	12' - 10"	800-21-3010	52	100-21-3007	77
24'	14' - 4"	800-24-3010	58	100-24-3007	86
27'	15' - 10"	800-27-3010	64	100-27-3007	96
30'	17' - 4"	800-30-3010	70	100-30-3007	105
33'	18' - 10"	800-33-3010	76	100-33-3007	114
36'	20' - 4"	800-36-3010	82	100-36-3007	123
42'	23' - 4"	800-42-3010	94	100-42-3007	141
48'	26' - 4"	800-48-3010	106	100-48-3007	159

Unload screws are all right hand, full pitch, and are welded to the screw shaft every 1 1/2 pitches. Drilled to fit most powerhead output shafts.

**Never start & stop augers under full load!**

SPECIALTY FLIGHTING --- SEE PAGE 19





## ***BIN SWEEPS*** (ELECTRIC)

BIN DIA.	5" for 8" TUBES			7" for 10" TUBES		
	PART #	WT(lbs)	HP	PART #	WT(lbs)	HP
18'	502-22-1100	86	1.5	702-22-1100	91	2.0
19'	502-22-1100	86	1.5	702-22-1100	91	2.0
21'	502-22-1100	86	2.0	702-22-1100	91	2.0
24'	502-27-1100	109	2.0	702-27-1100	110	3.0
27'	502-27-1100	109	2.0	702-27-1100	110	3.0
30'	502-36-1100	149	3.0	702-36-1100	155	5.0
33'	502-36-1100	149	3.0	702-36-1100	155	5.0
36'	502-36-1100	149	3.0	702-36-1100	155	5.0
42'	502-42-1100	169	3.0	702-42-1100	178	5.0
48'	502-48-1100	199	3.0	702-48-1100	202	5.0

All Bin Sweeps are adjustable and are designed to fit different diameter ranges.

502-22-1100, 702-22-1100: 18' to 22' diameter bins

502-27-1100, 702-27-1100: 22' to 27'-10" diameter bins

502-36-1100, 702-36-1100: 30' to 37'-1" diameter bins

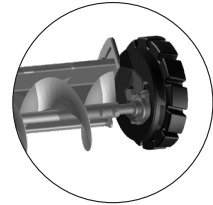
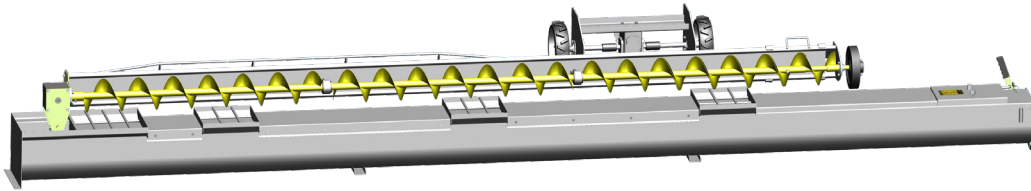
502-42-1100, 702-42-1100: 40'-2" to 43'-3" diameter bins

502-48-1100, 702-48-1100: 44' to 48' diameter bins

Bin Sweeps include the formed steel backboard, drive wheel, easy-off motor mount, driven sheaves, belt(s), and belt guard. Custom length sweeps can be order for different bin diameter size ranges and bins bigger than 48' diameter. Please call for price quotes on special sizes.

<b>REPLACEMENT WHEELS FOR BIN SWEEPS 2" WIDE WITH 1" BORE</b>	
DESCRIPTION	PART #
7" diameter for 5" sweep	702-00-0010
9" diameter for 7" sweep	902-00-0010
11" diameter for 7" & 9" sweep	102-00-0010
12" rubber tread replacement for 5:1 reduction wheel	802-00-1001RW
20" rubber tread replacement for 10:1 reduction wheel	802-00-1003RW
<b>ACCESSORIES</b>	
HD Style Tractor	702-00-TRAC
7" Sweep Carry Wheel	702-CW-1102
10:1 Reduction Wheel	802-00-1003
5: 1 Reduction Wheel	802-00-1001
Clump Buster	102-CB-1100
Bin wall sweep safety stop	BSS-00-1100

# U-TROUGH POWERSWEEP UNLOAD SYSTEMS



Shown with optional sweep tractor, reduction wheel at right, heavy duty clump buster at top right-mounts to top gearbox screws.

BIN DIA.	HOPPERS	8"		10"	
		PART #	WT(lbs)	PART #	WT(lbs)
19'	2	802-18-1102U	338	102-19-1102U	515
21'	2	802-21-1102U	369	102-21-1102U	542
24'	2	802-24-1102U	395	102-24-1102U	565
27'	2	802-27-1102U	417	102-27-1102U	610
30'	3	802-30-1103U	446	102-30-1103U	646
33'	3	802-33-1103U	477	102-33-1103U	698
36'	3	802-36-1103U	510	102-36-1103U	755
42'	4	802-42-1104U	588	102-42-1104U	868
48'	4	802-48-1104U	635	102-48-1104U	958
54'	4	802-54-1104U	682	102-54-1104U	1129
60'	5			102-60-1105U	1400
<b>Sweep Tractor / Reduction Wheels &amp; Accessories</b>					
7" Sweep Tractor		702-00-TRAC			
7" Sweep Carry Wheel		702-CW-1102	35		
10:1 Reduction Wheel		802-00-1003	80		
5: 1 Reduction Wheel		802-00-1001	30		
Clump Buster		102-CB-1100	24		

**Powersweep systems** are complete with 10" U-trough, upper and lower gearbox assembly, roller slide gates, rack and pinion controls, unload screw with splined coupler, sweep and upper gearbox assembly, bin sweep, bin sweep safety stop, wheel and drive, adjustable backboard, hopper flanges and bin wall plate. Prices DO NOT include powerhead drive or motor. Please select a powerhead drive from page 12, then refer to the horsepower charts at the end of this guide to select a drive motor.

## TUBE STYLE POWERSWEEP UNLOAD SYSTEMS

BIN DIA.	HOPPERS	8"		10"	
		PART #	WT(lbs)	PART #	WT(lbs)
19'	2	802-19-1102	338	102-19-1102	515
21'	2	802-21-1102	369	102-21-1102	542
24'	2	802-24-1102	395	102-24-1102	565
27'	2	802-27-1102	417	102-27-1102	610
30'	3	802-30-1103	446	102-30-1103	646
33'	3	802-33-1103	477	102-33-1103	698
36'	3	802-36-1103	510	102-36-1103	755
42'	4	802-42-1104	588	102-42-1104	868
48'	4	802-48-1104	635	102-48-1104	958
54'	4	802-54-1104	682	102-54-1104	1129
60'	5			102-60-1105	1400

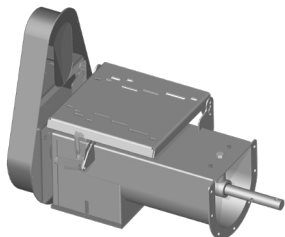
## STANDARD U-TROUGH UNLOADS

BIN DIA.	LENGTH	8"		10"	
		PART #	WT(lbs)	PART #	WT(lbs)
19'	12' - 0"	800-19-1002U	235	100-19-1002U	258
21'	13' - 0"	800-21-1002U	246	100-21-1002U	279
24'	14' - 6"	800-24-1002U	270	100-24-1002U	320
27'	16' - 0"	800-27-1002U	286	100-27-1002U	344
30'	17' - 6"	800-30-1003U	302	100-30-1003U	362
33'	19' - 0"	800-33-1003U	318	100-33-1003U	383
36'	20' - 6"	800-36-1003U	334	100-36-1003U	404
42'	23' - 6"	800-42-1004U	366	100-42-1004U	446
48'	26' - 6"	800-48-1004U	391	100-48-1004U	489

**Standard U-trough Unloads** are complete with 10" u-trough, roller slide gates, rack and pinion controls, unload screw, bin sweep pin connector, hopper flanges and bin wall plate. Prices DO NOT include powerhead drive or motor. Please select a powerhead drive from page 12, then refer to the horsepower charts at the end of this guide to select a drive motor.

# U-TROUGH POWERHEAD DRIVES

## HEAVY DUTY U-TROUGH HORIZONTAL POWERHEADS



The innovative, heavy duty motor mount design is the easy off style and has the over center belt tensioner as standard. The cast iron sheaves ( 8", and 10" models), mounting hardware, belt guard and back plate are all included. Motors and motor sheaves are NOT included. Belts supplied are for the most common motor applications and may not fit all styles of motors.

DESCRIPTION	ELECTRIC		HYDRAULIC	
	PART #	WT(lbs)	PART #	WT(lbs)
8" U-Trough Horizontal Powerhead	802-00-1102U	94	802-01-1100U	85
10" U-Trough Horizontal Powerhead	102-00-1102U	115	102-01-1100U	109
Hyd. Motor w/flow control			HYD-00-1100	8

## 22 DEGREE U-TROUGH INCLINED POWERHEADS

### MOTORS AND MOTOR SHEAVES

U-trough inclined powerheads are designed to operate with 1750 RPM (or less) motors. The recommended motor sheave sizes are as follows:

8" incline powerheads: two-groove 3.0"-3.2"

10" incline powerheads: three-groove 3.0"-3.4"



DESCRIPTION	Electric		Hydraulic	
	PART #	WT(lbs)	PART #	WT(lbs)
8" U-Trough Inclined Powerhead	802-81-4002U	166	802-81-4000U	151
10" U-Trough Inclined Powerhead	102-11-4002U	216	102-11-4000U	201
U-Trough Incline Support	102-IS-4002U			
Hyd. Motor w/flow control			HYD-00-1100	8

**U-trough Inclined Powerheads** are complete with cast iron sheave, drive belts, removable electric motor mount (or hydraulic mount), over center belt tensioner and quick release, belt guards, and greaseable hanger bearing on output shaft.

## Final Auger RPM Calculation

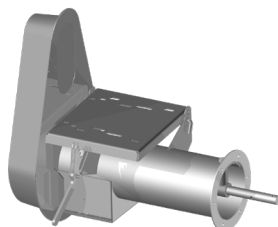
Drive Pulley Diameter X Motor RPM = Sum ÷ Driven Pulley Diameter = Auger RPM

### Example

$$\begin{aligned}
 1750 \times 3.75" &= 6562.50 \\
 &\div 14" = 468.75 \text{ RPM}
 \end{aligned}$$

# TUBE-STYLE POWERHEAD DRIVES

## HEAVY DUTY HORIZONTAL POWERHEADS



The innovative, heavy duty motor mount design is the easy off style and has the over center belt tensioner as standard. The cast iron sheaves (7", 8", and 10" models), the aluminum sheave (6" model), the drive belts(s), mounting hardware, belt guard and back plate are all included. Motors and motor sheaves are NOT included. Belts supplied are for the most common motor applications and may not fit all styles of motors.

DESCRIPTION	ELECTRIC		HYDRAULIC	
	PART #	WT(lbs)	PART #	WT(lbs)
6" Two Belt Powerhead	602-00-1102	92		
7" Two Belt Powerhead	702-00-1102	92		
8" Horizontal Powerhead	802-00-1102	94	802-01-1100	85
10" Horizontal Powerhead	102-00-1102	115	102-01-1100	109
12" Horizontal Powerhead	112-00-1102	135	112-01-1100	125
Hyd. Motor w/flow control			HYD-00-1100	8

## INCLINED POWERHEADS



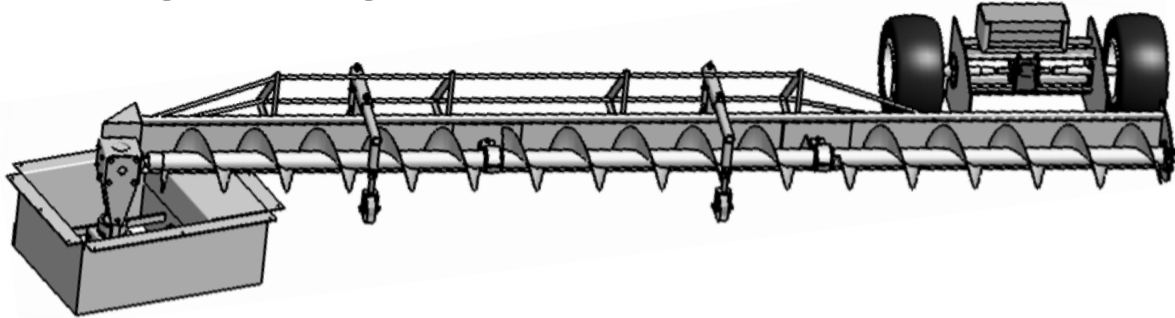
### MOTORS AND MOTOR SHEAVES

Tube-Style powerheads are designed to operate with 1750 RPM (or less) motors. The recommended motor sheave sizes are as follows:  
 6" and 7" powerheads: one-groove 2.5" - 3.0" or two-groove 2.5"-3.0"  
 8" and 6" to 8" incline powerheads: two-groove 3.0"-3.2"  
 10" and 8" to 10" incline powerheads: three-groove 3.0"-3.4"  
 12" and 10" to 12" incline powerheads; three-groove 3.4"-4.0"

DESCRIPTION	ELECTRIC		HYDRAULIC	
	PART #	WT(lbs)	PART #	WT(lbs)
6"-8" 25° Inclined Powerhead	602-68-4002	166	602-68-4000	151
8"-10" 25° Inclined Powerhead	802-81-4002	216	802-81-4000	201
10"-12" 12° Inclined Powerhead	102-11-4002	265	102-11-4000	248
Hyd. Motor w/flow control			HYD-00-1100	8
6-8" Incline Support Stand	602-IS-4002			
8-10" Incline Support Stand	802-IS-4002			
10-12" Incline Support Stand	102-IS-4002			

**Inclined Powerheads** are complete with cast iron sheave, drive belts, removable electric motor mount (or hydraulic mount), over center belt tensioner and quick release, belt guards, and greaseable hanger bearing on output shaft.

# COMMERCIAL POWERSWEEPS



	10"		12"	
Bin DIA.	PART #	HP	PART #	HP
30'	102-30-11CP	5.0	122-30-11CP	7.5
36'	102-36-11CP	5.0	122-36-11CP	7.5
42'	102-42-11CP	5.0	122-42-11CP	7.5
48'	102-48-11CP	7.5	122-48-11CP	10.0
54'	102-54-11CP	7.5	122-54-11CP	10.0
60'	102-60-11CP	7.5	122-60-11CP	10.0
75'	102-75-11CP	10.0	122-75-11CP	15.0
90'	102-90-11CP	15.0	122-90-11CP	15.0

ACCESSORY LIST	
DESCRIPTION	PART #
Gearbox stack including pivot brackets & U-joint (1.5:1 ratio ea.)	102-GB-11CP
10" HD style tractor for 1/2 hp XP motor (motor not included)	902-00-TRAC
12" HD style tractor for 1/2 hp XP motor (motor not included)	102-00-TRAC

## STANDARD FEATURES INCLUDE:

- **Heavy duty tractor style pusher** with 200:1 reduction gearbox and 1/2 hp explosion proof motor. We recommend an amp sensing switch be installed on the main sweep motor (not included) to regulate the on/off on this pushing unit.
- **Flanged, 1/4" material center sump** 24" x 36" overall with a 24" x 24" opening. Covered coupler and shaft channel.
- **HD gearbox set** with U-joint and pivot bracket assembly (1.5:1 reduction each).
- **Shaft, bearings, and coupler** from sprocket to gearbox.
- **HD 10 ga. formed and welded sweep backboard** with 8 ga. internal truss.
- **External backboard truss** with 5/8 rod.
- **Carrier wheels** (1 on 39 -54 ft. bins).
- **HD 1.4" flighting** mounted on 2" diameter thick wall tubing.
- **Hanger bearings** on sweep every 10 ft. No motor mount, this must be field fabricated by contractor on site to fit inside the access tunnel.

## ANGLE RINGS CLAMPS & ADAPTERS



	6"		8"		10"	
DESCRIPTION	PART #	WT(lbs)	PART #	WT	PART #	WT(lbs)
Angle Ring	600-00-1300	4	800-00-1300	6	100-00-1300	10
U-Trough Flange Clamp					100-UT-1300	5
Round Flange Clamp	600-02-1300	1	800-02-1300	3	100-02-1300	5
Reducer Flange Adapters	600-RF-1300	5	800-RF-1300	7	100-RF-1300	10
Galv. 1/2 Band (pr.)	600-00-0002	2	800-00-0003	5	100-00-0003	4

## SHEAVES

DESCRIPTION	PART #
One groove "AB" width, 8.0" diameter, 3/4" Bore	991-08-1300
One groove "B" width, 12.0" diameter, 3/4" Bore	991-12-1300
One groove "B" width, 12.0" diameter, 1" Bore	991-12-1301
Two groove "B" width, 12.0" diameter Cast Iron Bore, 1" Bore	992-12-1301
Two groove "B" width, 12.0" diameter Cast Iron Bore, 1-1/4" Bore	992-12-1302
Two groove "B" width, 14.0" diameter Cast Iron Bore, 1-1/4" Bore	992-14-1301
Three groove "B" width, 14.0" diameter Cast Iron Bore, 1-1/2" Bore	993-14-1302
Three groove "B" width, 14.0" diameter Cast Iron Bore, 1-3/4" Bore	993-14-1303
Two groove "B" width, 19" diameter Cast Iron Sheave, (SK Bushing)	992-19-2300
Three groove "B" width, 19" diameter Cast Iron Sheave, (SK Bushing)	993-19-1300

## BUSHINGS

DESCRIPTION	PART #
H series 5/8" diameter	990-01-1300
H series 7/8" diameter	990-02-1300
H series 1" diameter	990-03-1300
H series 1 1/8" diameter	990-04-1300
H series 1 1/4" diameter	990-05-1300
H series 1 3/8" diameter	990-06-1300
SK Series Bushing 1 1/4"	SK 1.25
SK Series Bushing 1 1/2"	SK 1.5
SK Series Bushing 1 3/4"	SK 1.75

## BELTS

DESCRIPTION	PART #
31" A Width V-Belt	A-31
45" B Width V-Belt	B-45
46" B Width V-Belt	B-46
50" B Width V-Belt	B-50
54" B Width V-Belt	B-54
56" B Width V-Belt	B-56
68" B Width V-Belt	B-68
69" B Width V-Belt	B-69



# REPAIR PARTS & ACCESSORIES

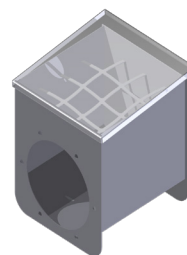
Miscellaneous	
DESCRIPTION	PART #
Gray touch-up paint (aerosol can)	IB-0410
4" Steel Square to Round	STR04
6" Steel Square to Round	STR06
8" Steel Square to Round	STR08
10" Steel Square to Round	STR10
1" Keyed drive shaft	600-1.00-KDS
1" Close connect shaft	600-1.00-CCS
1-1/4" Keyed drive shaft	800-1.25-KDS
1-1/4" Close connect shaft	800-1.25-CCS
1 1/4" Hanger bearing connect shaft	800-1.25-HBS
1-3/4" Keyed drive shaft	100-1.75-KDS
1-3/4" Close connect shaft	100-1.75-CCS
1-3/4" Hanger bearing connect shaft	100-1.75-HBS
4" Galvanized Connect Sleeve 12" long w/hardware	GS-004
5" Galvanized Connect Sleeve 16" long w/hardware	GS-005
6" Galvanized Connect Sleeve 20" long w/hardware	GS-006
8" Galvanized Connect Sleeve 24" long w/hardware	GS-008
10" Galvanized Connect Sleeve 30" long w/hardware	GS-010
4" Auger Safety Cage	PC04
5" Auger Safety Cage	PC05
6" Auger Safety Cage	PC06
8"- 14" X 14" Standard Inlet Hopper with lid	HS08
10"- 14" X 14" Standard Inlet Hopper with lid	HS10
8"- 14" X 14" 30 Degree Inlet Hopper with lid	HP3008
10"- 14" X 14" 30 Degree Inlet Hopper with lid	HP3010
38-1/2" Little Giant Poly Grain Hopper	MPH
48-1/2" Little Giant Poly Grain Hopper	BPH



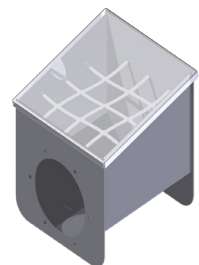
48-1/2" Poly Hopper



38-1/2" Poly Hopper



Standard hopper  
w/ cover



30 degree hopper  
w/ cover



# REPAIR PARTS & ACCESSORIES

Tube Style Powerhead Parts	
DESCRIPTION	PART #
Yellow poly shield for 8" and 10" powerheads	BG-16
Shield back plate for 8" powerhead	802-BP-1102
Shield back plate for 10" powerhead	102-BP-1102
Drive screw for 8" powerhead	802-00-1102F
Drive screw for 10" powerhead	102-00-1102F
Motor mount plate for 8" powerhead	802-MP-1102
Motor mount plate for 10" powerhead	102-MP-1102
Hinge pin for 8" motor mount	802-00-1102P
Hinge pin for 10" motor mount	102-00-1102P
Belt tensioner for all powerheads	102-BT-TNSR
Drive carton for 6" powerhead	602-00-DCTN
Drive carton for 7" powerhead	702-00-DCTN
Drive carton for 8" powerhead & 6-8 IPH	802-00-DCTN
Drive carton for 10" powerhead & 8-10 IPH	102-00-DCTN
Drive carton for 10-12 IPH	102-11-DCTN
U-Joint for 6-8 IPH	602-UJ-0002
U-Joint for 8-10 IPH	802-UJ-0002
U-Joint for 10-12 IPH	102-UJ-0002

Bearings	
DESCRIPTION	PART #
Split wood bearing for 1-1/4" shaft	802-WB-0125
Split wood bearing for 1-1/2" shaft	802-WB-0150
Split wood bearing for 2" shaft	800-WB-0200
1" Insert bearing and flanges for 6" & 7" powerhead	800-BR-0100
1-1/4" Insert bearing and flanges for 8" powerhead	800-BR-0125
1-3/4" Insert bearing and flanges for 10" powerhead	100-BR-0134
Greaseable hanger bearing for 6-8 IPH (tube style)	802-68-0001
Greaseable hanger bearing for 8-10 IPH (tube style)	802-81-0001
Greaseable hanger bearing for 10-12 IPH (tube style)	102-11-0001
Greaseable hanger bearing for 6" powerhead (tube style)	602-00-0001
Greaseable hanger bearing for 8" powerhead (tube style)	802-00-0001
Greaseable hanger bearing for 10" powerhead (tube style)	102-00-0001
Greaseable hanger bearing for 8" horizontal & 8" UT-IPH	802-00-0001U
Greaseable hanger bearing for 10" horizontal & 10" UT-IPH	102-68-0001U
8" Brass Bushing 1.25"	802-BB-0001
10" Brass Bushing 1.75"	102-BB-0001

# REPAIR PARTS & ACCESSORIES

U-Trough Powersweep Parts	
DESCRIPTION	PART #
8" Weld-in Spline for Powersweep Flighting	802-SP-3007
10" Weld-in Spline for Powersweep Flighting	102-SP-3010
Lower Gearbox with shift lever for powersweep	002-00-4001
Upper Gearbox for powersweep	002-00-4002
U-Joint with splined connector for 8" U-Trough Powersweep (6" long)	802-UJ-1102U
U-Joint with splined connector for 10" U-Trough Powersweep (5" long)	102-UJ-1102U
8" & 10" Gearbox Cast Iron Pivot	102-PW-1102
Side bracket for gearbox, 8" powersweep (10-1/4" long)	802-SB-0000
Angled Side bracket for sweep side, 8" powersweep (10-1/4" long)	802-AB-0000
Side bracket for gearbox, 10" powersweep (9-1/4" long)	102-SB-0000
Angled Side bracket for sweep side, 10" powersweep (9-1/4" long)	102-AB-0000
14" X 27" x 2" center hopper flange for U-Trough Powersweep	200-27-2014
Bin wall sweep safety stop	BSS-00-1100
R&P Crank Handle	802-PS-HDLE
Gearbox engage lever with grip handle	102-00-HDLE
Lock-out lever kit	102-00-LOLK
Galvanized sweep backboard extension	102-BB-EXTN
Sweep extension assembly with 9" wheel	802-SB-EXTA
8" & 10" UT Powersweep R&P gear assembly	802-RP-1108U
Accessory carton 19' through 27' powersweep	1102UC
Accessory carton 30' through 36' powersweep	1103UC
Accessory carton 42' through 54' powersweep	1104UC
Accessory carton 60' through 68' powersweep	1105UC

U-Trough Style Powerhead Parts	
DESCRIPTION	PART #
Yellow poly shield for 8" and 10" powerheads	BG-16
Shield back plate for 8" powerhead	802-BP-1102
Shield back plate for 10" powerhead	102-BP-1102
Drive screw for 8" powerhead	802-00-1102F
Drive screw for 10" powerhead	102-00-1102F
Drive screw for 8" UT IPH	802-81-4002UF
Drive screw for 10" UT IPH	102-11-4002UF
Motor mount plate for 8" powerhead	802-MP-1102
Motor mount plate for 10" powerhead	102-MP-1102
Hinge pin for 8" motor mount	802-00-1102P
Hinge pin for 10" motor mount	102-00-1102P
Belt tensioner for all powerheads	102-BT-TNSR
Drive carton for 8" horizontal & 8" UT IPH	802-00-DCTNU
Drive carton for 10" horizontal & 10" UT IPH	102-00-DCTNU
U-Joint for 8" UT - IPH	802-00-000U
U-Joint for 10" UT - IPH	102-00-000U

# POWERSWEEP SCREWS

Powersweep Drive Screws With Splined End					
		8"		10"	
BIN DIA.	LENGTH	PART #	WT(lbs)	PART #	WT(lbs)
19'	132.125"	802-19-3010PS	48	102-19-3007PS	68
21'	147.125"	802-21-3010PS	52	102-21-3007PS	71
24'	165.125"	802-24-3010PS	58	102-24-3007PS	77
27'	184.125"	802-27-3010PS	64	102-27-3007PS	90
30'	203.125"	802-30-3010PS	70	102-30-3007PS	96
33'	220.125"	802-33-3010PS	76	102-33-3007PS	105
36'	240.125"	802-36-3010PS	82	102-36-3007PS	114
42'	277.125"	802-42-3010PS	94	102-42-3007PS	123
48'	323.125"	802-48-3010PS	106	102-48-3007PS	141
54'	350.125"			102-54-3007PS	164
60'	389.125"			102-60-3007PS	190

Powersweep Screws			
		8" & 10"	
BIN DIA.	LENGTH	PART #	WT(lbs)
19'	82"	802-18-3010PSF	48
21'	100"	802-21-3010PSF	52
24'	119"	802-24-3010PSF	58
27'	137"	802-27-3010PSF	64
30'	156"	802-30-3010PSF	70
33'	172"	802-33-3010PSF	76
36'	191"	802-36-3010PSF	82
42'	227"	802-42-3010PSF	94
48'	258"	802-48-3010PSF	106
54'	300"	802-54-3010PSF	120

## ***SPECIALTY FLIGHTING***

<b>BRUSH FLIGHTING</b>	<b>PART #</b>
5" On Mild Steel Tubing for 6" Tube	60B-01-3010
7" On Mild Steel Tubing for 8" Tube	80B-01-3010
9" On Mild Steel Tubing	90B-01-3010
<b>POLY FLIGHTING (Mtd. On Galv. Tube)</b>	
5 5/8" Straight Poly Flight	50P-01-GA10
6" Straight Poly Flight	60P-01-GA10
7" Straight Poly Flight	70P-01GA10
9" Straight Poly Flight	90P-01-GA10
12" Straight Poly Flight	12P-01-GA10
5" Cupped Poly Flight	5PC-01-GA10
6" Cupped Poly Flight	6PC-01-GA10
7" Cupped Poly Flight	7PC-01-GA10
<b>POLY FLIGHTING (Mtd. On SS Tube)</b>	
5 5/8" Straight Poly Flight	50P-01-SS10
6" Straight Poly Flight	60P-01-SS10
7" Straight Poly Flight	70P-01-SS10
9" Straight Poly Flight	90P-01-SS10
12" Straight Poly Flight	12P-01-SS07
5" Cupped Poly Flight	5PC-01-SS10
6" Cupped Poly Flight	6PC-01-SS10
7" Cupped Poly Flight	7PC-01-SS10

## ***REPLACEMENT FLIGHTING***

We have access to most sizes of replacement flightings for repairing a current model, an older model, or an obsolete auger. Available in right-hand or left-hand pitch, these come in 10' lengths and are generally in stock at our supplier for immediate shipping. Flighting can be cut in half to allow for parcel shipment. Call for price quotes.

# DESIGN INFORMATION

SIZE	SCREW RPM	0° (70% Fill)		30° (60% Fill)		45° (50% Fill)		60° (40% Fill)	
		BU./HR.	HP/10° SECTION	BU./HR.	HP/10° SECTION	BU./HR.	HP/10° SECTION	BU./HR.	HP/10° SECTION
6"	300	580	0.5	500	0.6	420	0.7	330	0.7
	500	960	0.6	830	0.9	690	0.9	550	1.0
7"	300	995	0.7	855	0.9	710	0.9	570	1.0
	500	1600	0.9	1425	1.0	1185	1.2	950	1.3
8"	170	900	0.8	770	1.0	640	1.2	513	1.4
	411	2110	0.9	1811	1.1	1510	1.3	1210	1.5
10"	170	1910	0.9	1635	1.1	1365	1.3	1090	1.5
	300	3370	1.0	2890	1.2	2405	1.4	1925	1.6
	400	4490	1.2	3850	1.4	3210	1.6	2570	1.8
13"	170	4525	2.2	3880	2.4	3230	2.6	2585	2.8
	280	7450	2.6	6385	2.8	5320	3.0	4260	3.2

Above capacity ratings are based on the following formula:

$$\text{BPH} = 0.022 \times (D-1)^3 \times \text{RPM} \times F$$

BPH = Bushels Per Hour

D = Diameter of Auger -- Inches

RPM = Revolutions Per Minute of Auger Screw

F = % of fill of Auger Tube

The percentage of fill above degree of incline is approximately the fullest an auger will fill at those inclines.

The above horsepower ratings are for the heaviest material (wheat or soybeans). Capacities and horsepower ratings will vary on the method of feeding material into conveyor, incline, or conveyor, and conduction of grain. For wet material, add 50% to horsepower. For gas engines, multiply electric horsepower from chart by 1 1/2.

## EXAMPLE:

A 10" auger 60' long, operating at a 45° incline at 400 RPM will deliver 3210 BPH and will require 1.60 horsepower per ten foot section, or 9.6 HP electric motor, or 1 1/2 x 9.6 = 15.0 HP gas engine. (Remember to add additional 50% to HP if conveying wet material).

If horsepower is less than 1, double the horsepower; if 1 to 2, multiply by 1.5; if 2 to 4, multiply 1.25; and if 4 to 5, multiply by 1.1. No correction is necessary for values above 5 HP.

# HORSEPOWER REQUIREMENTS

## POWERSWEEP SYSTEMS

	8"			10"		
BIN DIA.	HORIZ.	INCL.	VERT.	HORIZ.	INCL.	VERT.
18'	5.0	7.5	15.0	7.5	10.0	15.0
21'	5.0	7.5	10.0	7.5	10.0	15.0
24'	5.0	7.5	10.0	7.5	10.0	20.0
27'	7.5	7.5	10.0	7.5	10.0	20.0
30'	7.5	10.0	15.0	7.5	15.0	20.0
33'	7.5	10.0	15.0	10.0	15.0	20.0
36'	7.5	10.0	15.0	10.0	15.0	20.0
42'	10.0	10.0	15.0	10.0	15.0	20.0
48'	10.0	15.0	20.0	15.0	15.0	25.0
54'				15.0	20.0	25.0
60'				20.0	20.0	30.0

**NOTE:** Horsepower requirements for both tube and u-trough style powersweeps are based on clean, dry, free-flowing wheat. Motor requirements may vary depending on moisture content, etc. Please refer to chart on page 14 for exact calculations

## POWERHEADS WITH UNLOAD TUBE APPLICATIONS

## BIN SWEEPS

	8"			10"		
BIN DIA.	HORIZ.	INCL.	VERT.	HORIZ.	INCL.	VERT.
18'	3.0	5.0	7.5	5.0	7.5	10.0
21'	5.0	7.5	10.0	7.5	7.5	10.0
24'	5.0	7.5	10.0	7.5	10.0	15.0
27'	5.0	7.5	10.0	7.5	10.0	15.0
30'	5.0	7.5	10.0	7.5	10.0	15.0
33'	5.0	7.5	10.0	7.5	10.0	15.0
36'	5.0	7.5	10.0	10.0	15.0	20.0
42'	7.5	10.0	15.0	10.0	15.0	20.0
48'	7.5	10.0	15.0	15.0	15.0	20.0

BIN DIA.	5" for 8" Tubes	7" for 10" Tubes
18'	1.5	3.0
21'	2.0	3.0
24'	2.0	3.0
27'	2.0	3.0
30'	3.0	5.0
33'	3.0	5.0
36'	3.0	5.0

	ELECTRIC		HYDRAULIC	
DESCRIPTION	PART #	WT(lbs)	PART #	WT(lbs)
6"-8" 25° Inclined Powerhead	602-68-4002	166	602-68-4000	151
8"-10" 25° Inclined Powerhead	802-81-4002	216	802-81-4000	201

# ***LIMITED WARRANTY***

Haven Industries, hereinafter is referred to as "Agent". The manufacturers of The Grain Saver Auger Equipment warranties each Grain Saver product to be free from defects in material and workmanship for a period of twelve (12) months. The "defects" must be reported to the manufacturer, the "Agent", or to the "Agent's" representatives within the 12 month warranty period commencing on the date of the original sale.

This limited warranty is made expressly in lieu of all other warranties, whether expressed or implied but not limited to, warranties of merchantability and fitness for a particular purpose, and of all other obligations or liabilities on the part of the "Agent". The customer's rights and remedies are governed exclusively by the terms and conditions of this limited manufacturer's warranty, and the customer expressly waives for himself, and any subsequent purchaser, any claim based upon contract, tort, strict liability, or otherwise.

"Manufacturer's" obligation and sole remedy under this warranty is exclusively limited, at "manufacturer's" option, to either repair or replace any part or product found to be "defective" providing that such part or product be returned to the "Agent's" place of business in Dexter, Minnesota, Transportation Charges Prepaid, or to the selling dealer or distributor's place of business from whom the purchase was made. All corrective work on products must be approved in writing by "Agent" prior to such repairs. No allowances will be made for corrective work that has been completed without this expressed approval.

Improper lubrication, improper installation, deterioration by chemical action, and premature wear caused by the presence of abrasive material does not constitute "defects".

This warranty shall not render "Agent" liable for any consequential damages including, and without limitation to; personal injury, expenses of removing the product, loss or damage resulting to the equipment or structure(s) in which the "Manufacturer's" products have been installed, loss of such equipment or structure, loss of commodity, or loss of profits.

This warranty shall be declared null and void immediately if the purchaser or the representative of the purchaser, or anyone else shall modify or install, or cause to be modified or installed replacement parts not sold, distributed, or approved by the "Manufacturer".

This warranty shall not be extended to gearboxes, batteries, drive belts, tires, inner tubes, electrical controls, or any purchased component that carries it's own manufacturer's warranty. The warranty on these products shall be limited only to the term of the published warranties on these products.

Manufacturer is not responsible for installation of the product, and is not liable for any loss or damage attributed to any improper installation.

"Agent" neither assumes nor authorizes anyone to assume for "Agent", any liabilities in connection with the sale of its products.

All claims under this limited warranty must be presented in writing within 30 days of the date of assumed failure to: Haven Industries 67374 310<sup>th</sup> St. Dexter, Minnesota 55926. Failure to do so will result in customer's claim being waived and not enforced.

This warranty is subject to existing conditions of supply, which may directly affect the ability of the "Manufacturer" to obtain materials or manufactured replacement parts.

Customer agrees to incorporate the terms of this warranty into any subsequent sale or transfer of these products to a third party such that the "Agent's" liability shall be expressed, limited to the terms and conditions of this limited warranty, as well as the choice of law and choice of jurisdiction provisions of this agreement. If any party brings any action against the "Agent", for other than those set forth in this limited warranty against any such claims and/or judgments thereon. In no event shall the "Agent's" liability extend beyond the terms and conditions of the warranty provided to the "Agent's" original customer.

Customer agrees that Customer's rights and responsibilities, in regard to this transaction, shall be governed by the laws of the state of Minnesota and shall be the exclusive jurisdiction for bringing any dispute in regards to this transaction.

Customer acknowledges that he is knowledgeable concerning the goods purchased from the "Agent". Customer has reviewed the limited warranty and that the remedies provided are adequate and acceptable to the customer. "Agent" is not responsible or liable for any claim of personal injury or death.

## Our Service Commitment...

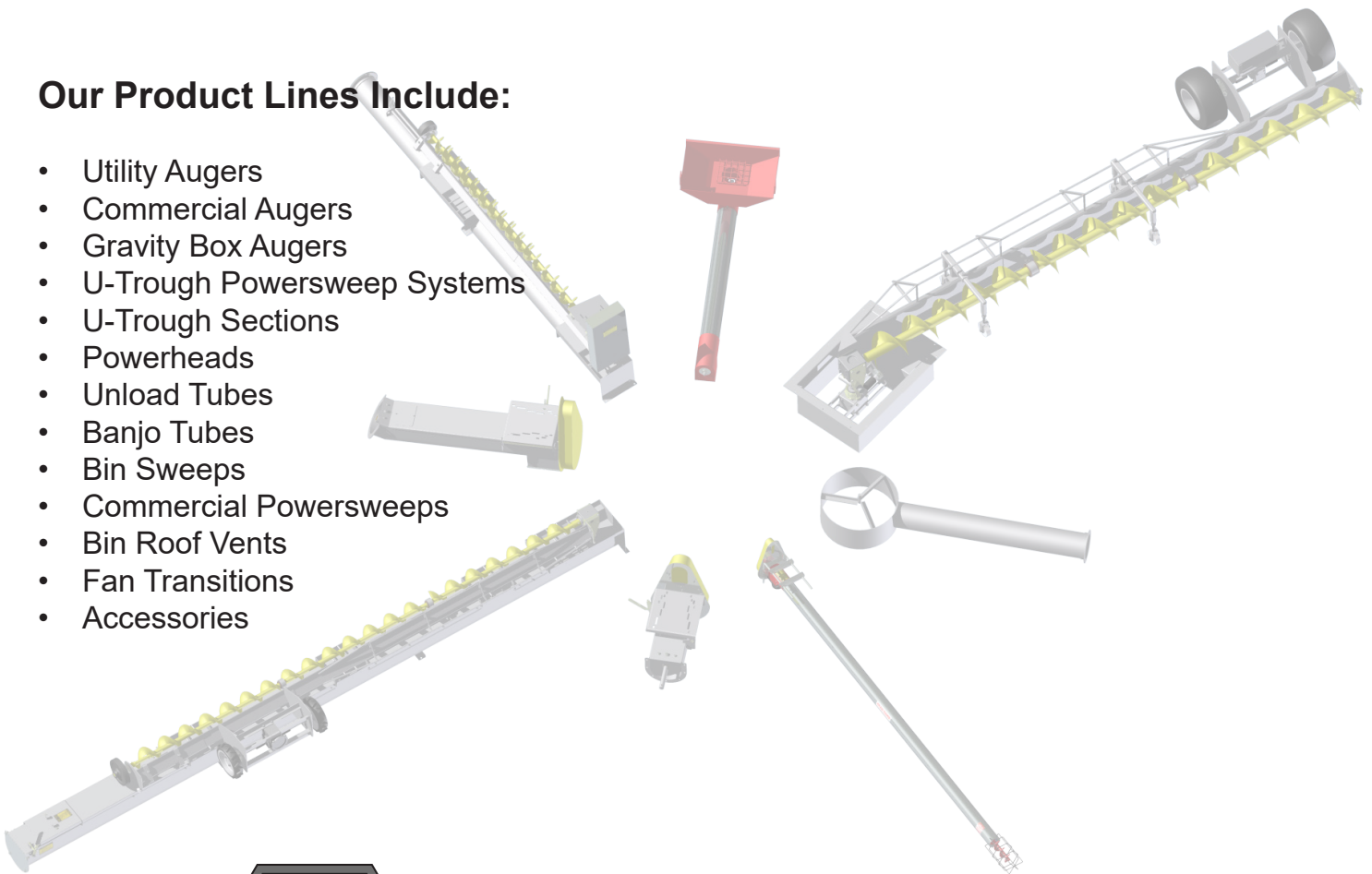
Since the founding of our company in 1995, we have been expanding our line of grain handling equipment. Our products are constantly evolving to enhance their functionality and durability.

To improve on product engineering, customer ideas are important. Whether it's for a new or existing item, we look forward to developing and building tomorrow's grain handling products with you.

For more information, contact HAVEN INDUSTRIES or your local dealer for detailed product information. We welcome your questions and comments!

### Our Product Lines Include:

- Utility Augers
- Commercial Augers
- Gravity Box Augers
- U-Trough Powersweep Systems
- U-Trough Sections
- Powerheads
- Unload Tubes
- Banjo Tubes
- Bin Sweeps
- Commercial Powersweeps
- Bin Roof Vents
- Fan Transitions
- Accessories



# Haven Industries

Grain Augers & Bin Unload Systems  
[www.havenindustries.us](http://www.havenindustries.us)

67374 310th St.  
Dexter, MN 55926  
Ph. 507.584.6300  
Fax. 507.584.0215

LOCAL RESELLER: